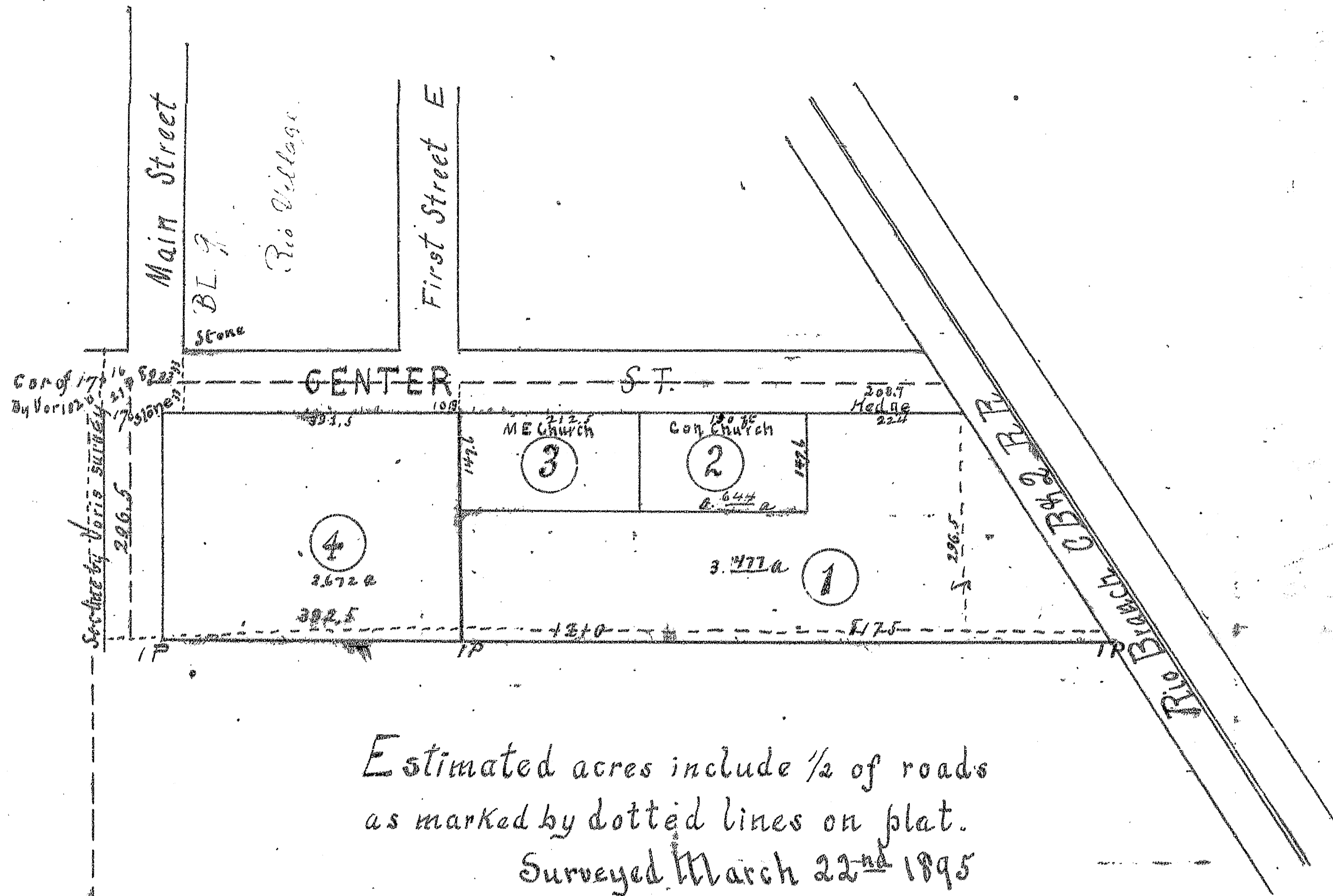


Plat of

A Subdivision of the North part of
NW Qr Sec 21 T13N R1E



Estimated acres include 1/2 of roads
as marked by dotted lines on plat.

Surveyed March 22nd 1895

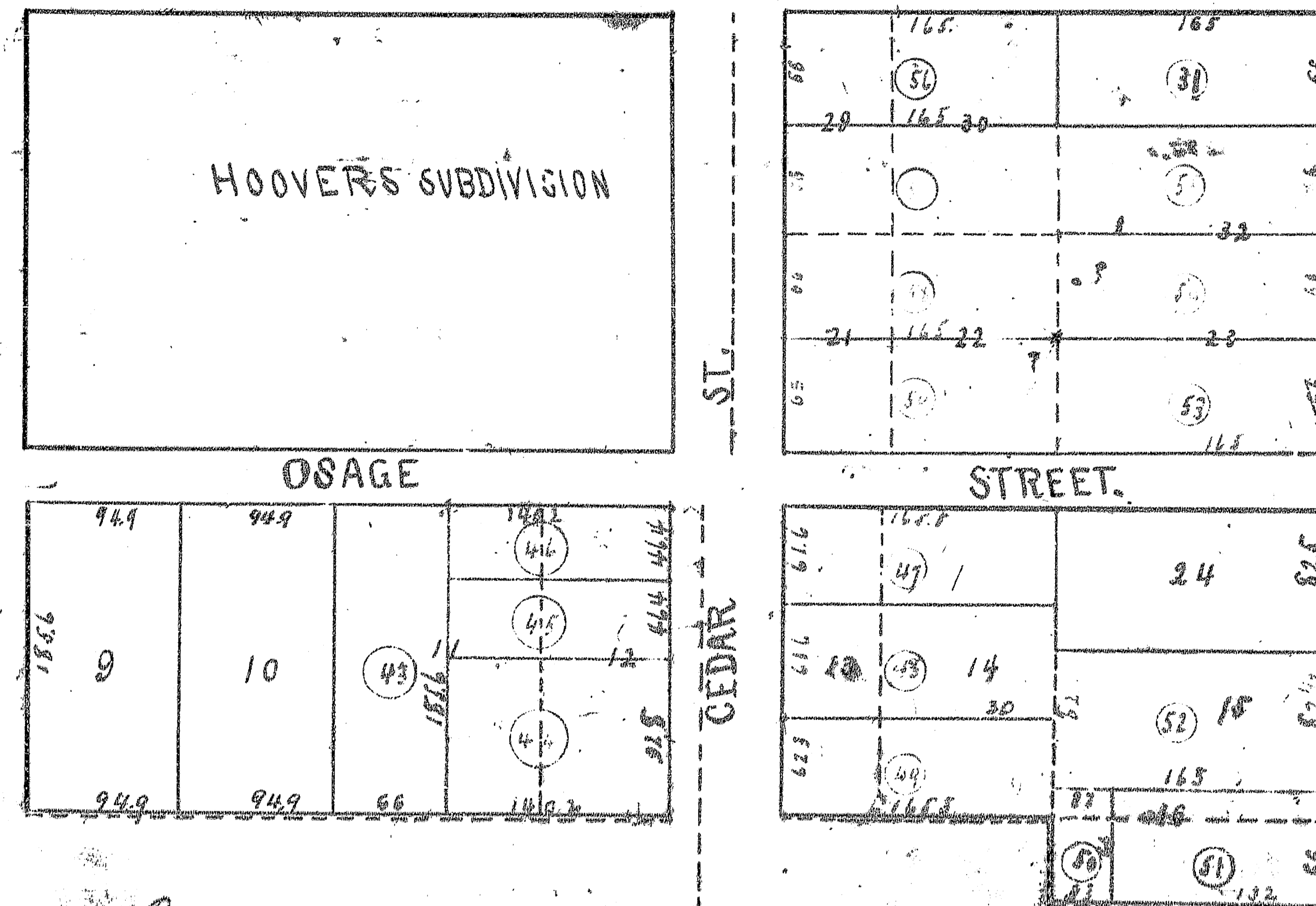
G S Richey
Co Sur

Subdivision of

Original Lots 11, 12, 13, 14, 15, 21, 22, 29, 30, 23. N. 3 rods of 16 of
R S Johnson's Addition to the City of
Galising

Original Plat in Black

This Subdivision in Red



Platted for use of Knox Co by order of the
County Clerk April 26th 1895
G S Richey
Co Surveyor